

DOLFIN
SWIMWEAR



Educational Data Services
Bid Department
236 Midland Ave.
Saddle Brook, NJ 07668

SPRING SUMMER 2018

SUITING THE BEST



2017 Women's
NCAA DI Champions



2016 Men's
NCAA DIII Champions

We are proud to be the exclusive choice for some of the nation's best collegiate swimming programs.

PARTNERSHIPS





TABLE OF CONTENTS

COMPETE

4  LIGHTSTRIKE

12  COMPETITIVE

SUBLIMATION

TEAM SUITS

TRAIN

20  TRAINING

UGLIES

LIVE

36  LIFESTYLE

AQUASHAPE

BELLAS

UGLIES BOARD SHORTS

72  GUARD

EXTRAS

80  TEAM COLORS

SIZE CHART



LIGHT⚡*STRIKE*[™]

**ELECTRIFY
YOUR LANE**



DOLFIN

BE PREPARED TO WIN.

LightStrike™ was developed after years of research in biomechanics, active drag analysis, fabric innovation, and compression analysis.

This new FINA approved suit is supported by Greg Meehan, *US Olympic and World Championship Head Coach*, Dr. Genadijus Sokolovas, *PhD in Biomechanics and former Performance Director with USA Swimming* and Styku® 3D Blomapping Engineering.

LIGHTSTRIKE™

ELITE RACING ARMOR

INCREMENTAL PERFECTIONS = GOLD MEDAL RESULTS



LightStrike™ is the culmination of years of research in biomechanics, active drag analysis, fabric innovation, and compression analysis. This new suit was developed with the support and research of the following:

- **GREG MEEHAN**
US Olympic and World Championship Head Coach, Stanford University
- **DR. GENADIJUS SOKOLOVAS**
PhD in Biomechanics, and former Performance Director with USA Swimming
- **STYKU 3D ULTRASONIC BIOMAP ENGINEERING**
3D Infrared Data Extraction Tower, extracts millions of precise data points
- **PATENT-PENDING**
Core power control taping

"LightStrike™ gives our athletes the power of a perfect fit, customized to their specific stroke and body type along with the greatest technology on the market." - Greg Meehan



STORMLIGHT SHELL & HYPERLIGHT LINING

The fabrication was developed in Italy, after months of rigorous testing. Results produced a unique and exclusive combination of the highest strength to weight ratio of any previous FINA approved fabric.



PERFECTA-FIT MICRO-SIZING

With the Styku® 3D body scanner, Dolfin has created the perfect sizing system for all athletes. The unique and exclusive Micro-sizing fit will allow unprecedented customization for every swimmer. All athletes will have a perfect fit in 3 key zones - Chest, Torso and Hips/Legs - necessary to perform to the best of their ability.



CORE POWER

Patent-Pending control taping around the torso is exclusively designed to compress, control and activate your major power center - your core.



VARIABLE COMPRESSION

Utilizing the first-ever variable compression fabric through the inner thighs, athletes can finally customize their major muscle control to fit their range of motion and their race plan. Long axis or short axis, the choice is finally yours. *(Flex Leg only)*



VIBRATION CONTROL TAPING

This 3D molding mimics anatomy to reduce drag while increasing compression and control for additional energy return.



POWER FLEX STRAPS

Control with comfort and strength without compromised motion.



PERFECTA-FIT MICRO SIZING



Data collected using Styku® 3D Ultrasonic Biomapping

(pictured left)



POWER FLEX STRAPS



CORE POWER TORSO CONTROL TAPING



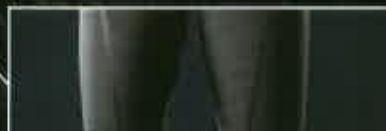
EXCLUSIVE FABRICATION STORMLIGHT SHELL & HYPERLIGHT LINING



VIBRATION CONTROL TAPING

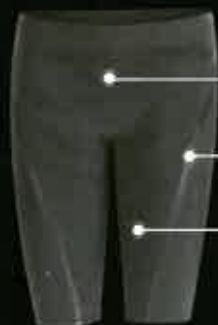


VARIABLE COMPRESSION



MEN'S

Available in Regular & High Waisted • Flex Leg • Tight Leg



EXCLUSIVE FABRICATION

VIBRATION CONTROL TAPING

VARIABLE COMPRESSION
(Flex Leg only)

WOMEN'S

Available in Open Back & Closed Back
• Flex Leg • Tight Leg • Long Torso • Regular Torso



428



426



428
Back

NEW! WOMEN'S OPEN BACK

1141RRF *Flex Leg* | 1141RRT *Tight Leg*
1141RLF *Flex Leg Long* | 1141RLT *Tight Leg Long*
42% Nylon / 31% Polyester / 27% Spandex.
See technical features [pg. 6-7]

Colors: Black (426), Silver (428)
Flex Leg Sizes: 24, 26, 28, 30
Tight Leg Sizes: 22, 24, 26, 28, 30
Long Sizes: 24, 26, 28

428



426



428
Back

NEW! WOMEN'S CLOSED BACK

1142RRF *Flex Leg* | 1142RRT *Tight Leg*
1142RLF *Flex Leg Long* | 1142RLT *Tight Leg Long*
42% Nylon / 31% Polyester / 27% Spandex. Full-wrap torso taping eliminates drumming and gapping. See technical features [pg. 6-7]

Colors: Black (426), Silver (428)
Flex Leg Sizes: 24, 26, 28, 30
Tight Leg Sizes: 22, 24, 26, 28, 30
Long Sizes: 24, 26, 28



LIGHTSTRIKE RACING ARMOR





426



426
Back

428

NEW! MEN'S JAMMER

1131F *Flex Leg* | 1131T *Tight Leg*
42% Nylon / 31% Polyester / 27% Spandex.
See technical features [pg. 6-7]

Colors: Black (426), Silver (428)
Flex Leg Sizes: 24, 26, 28, 30
Tight Leg Sizes: 22, 24, 26, 28, 30



428



426

428
Back

NEW! MEN'S HIGH WAISTED JAMMER

1132F *Flex Leg* | 1132T *Tight Leg*
42% Nylon / 31% Polyester / 27% Spandex.
Increased rise along lower torso.
See technical features [pg. 6-7]

Colors: Black (426), Silver (428)
Flex Leg Sizes: 24, 26, 28, 30
Tight Leg Sizes: 22, 24, 26, 28, 30

**COMPETE
WITH THE
BEST**





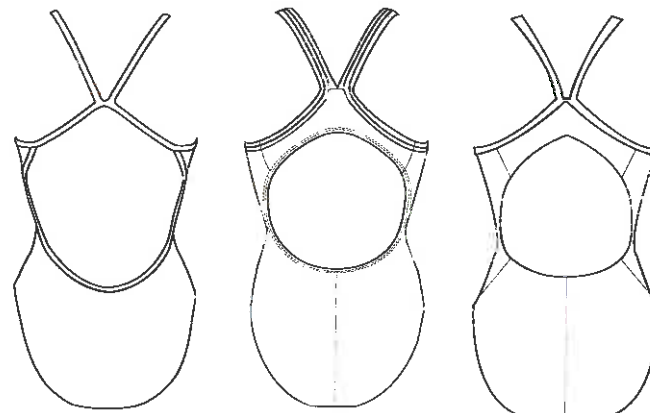
DOLFIN

THERE IS NO OFF-SEASON.

Wet concrete, scratchy blocks,
waaaaay too early in the mornings,
and yes...we know our skin smells
like that. Rising up and perfecting
the little things are what separates
hundredths of seconds...the difference
between your best season and your
worst. Our cologne is chlorine
and we wear it by the gallon.

NEW! CUSTOM SUBLIMATION

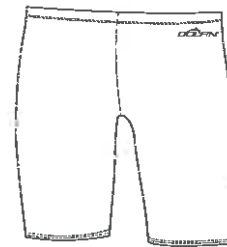
Choose from 45 Colors, 10 Customizable Prints &
11 Logo Placement Areas! Low Minimums!
100% Polyester



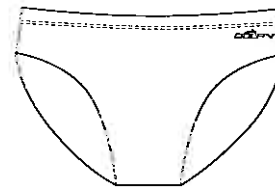
String Back

DBX Back

V Back



Jammer



Racer

1. PICK YOUR STYLE

2. PICK YOUR PRINT



Pick between 4 color, 3 color and 2 color prints.

*Prints shown using our primary sublimation colors (shown right).

Top left to bottom right:
4 color, 4 color, 4 color, 2 color,
3 color, 3 color, 3 color, 3 color,
3 color, 3 color.

Visit www.dolphinsswimwear.com
for more information

Colors



Binding/Strap Colors



Liner Colors - Black & Navy

3. PICK YOUR COLORS

3 of our
11 logo
placements!

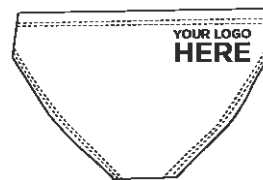
4. ADD YOUR LOGO



Shown on String Back Chest
[5 Logo Placement Options]



Shown on Jammer Back
[4 Logo Placement Options]



Shown on Racer Back
[2 Logo Placement Options]



COMPETITIVE SUBLIMATION



RELIANCE

- Chlorine Resistant Fabric
- Most Durable in the Market
- 100% RELIANCE Polyester

Shop your team color!
See our team suits color guide [pg. 80]



ION: DBX BACK 1-PIECE 121DBX
100% Polyester. Fully lined.

Prints: Blue (066), Green (072),
Blue/Green (073), Red/White/Blue (074)
Sizes: 22-40



ION: SPLICED JAMMER 141JM
100% Polyester. Front panel liner.

Prints: Blue (066), Green (072),
Blue/Green (073), Red/White/Blue (074)
Sizes: 22-40



XtraSleek Eco™

- 78% Recycled Nylon / 22% Xtra Life Lycra
- Lasts 10x Longer than Traditional Spandex

Shop your team color!
See our team suits color guide [pg. 80]



083



081



082



083
Back



085

HURRICANE: V-2 BACK 1-PIECE 124VT

78% Recycled Nylon / 22% Xtra Life Lycra.
Fully lined.

Prints: Blue (081), Green (082), Purple (083),
Red (085)

Sizes: 22-40



085



081



082



083



085
Back

HURRICANE: SPLICED JAMMER 144JM

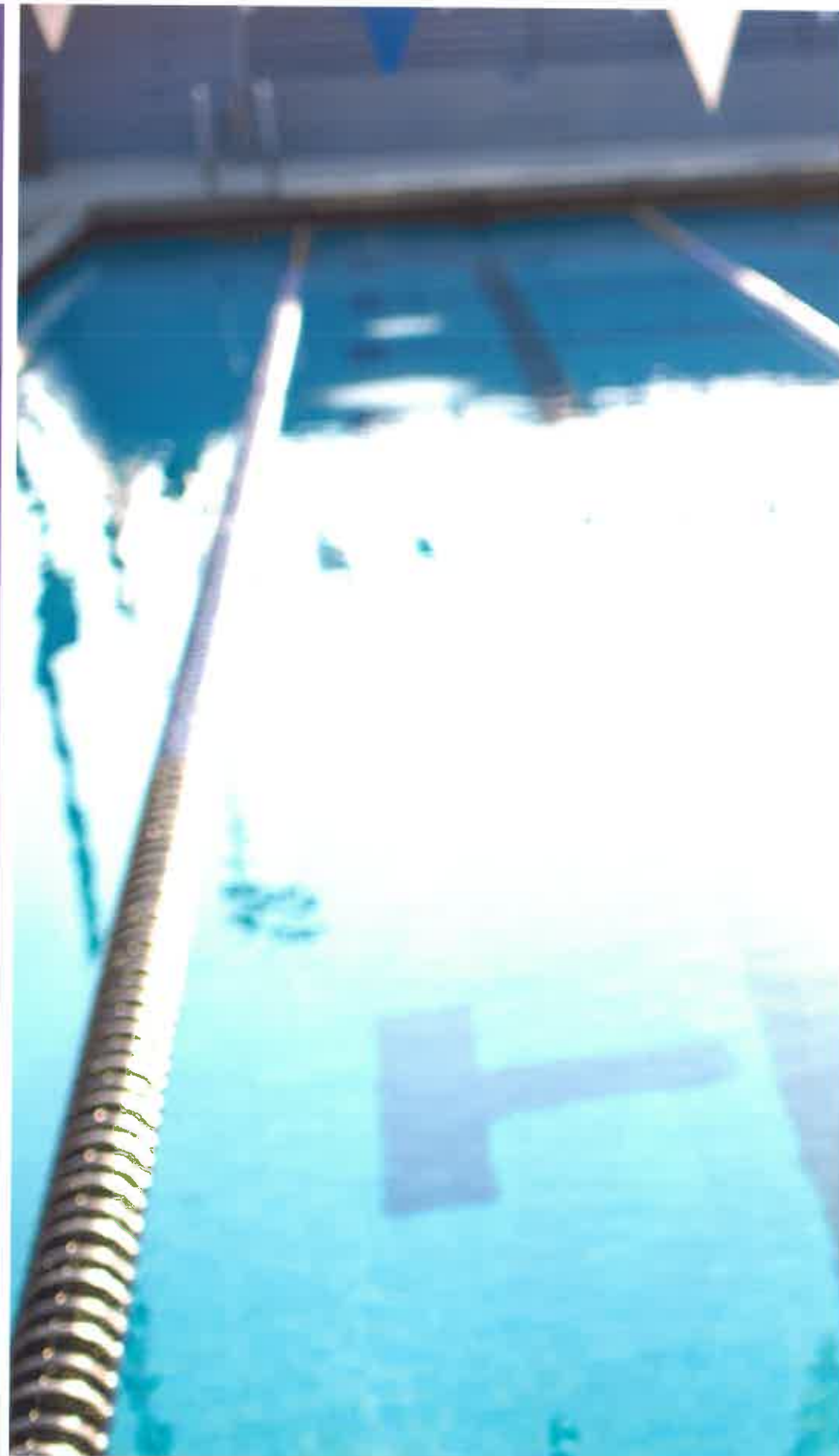
78% Recycled Nylon / 22% Xtra Life Lycra.
Front panel liner.

Prints: Blue (081), Green (082), Purple (083),
Red (085)

Sizes: 22-40

COMPETITIVE XTRA SLEEK ECO

TRAIN
IN COLOR





DOLFINI

IT'S TIME TO START
YOUR COLLECTION.

Leave the boring to the amateurs.
Keep your mental focus strong
and your suit colors stronger. Be
ready to combat your workouts with
styles and prints for every day of
the week. Bring your best,
we can take it.

uglies



MAKE TRAINING FUN



025



025
Back



040

NEW! DOUBLE STRAP BACK 1-PIECE 9503L
91% Polyester / 9% Spandex. Fully lined in bright, contrasting colors.

Prints: Looking Glass (025), Rainbow Drop (040)
Sizes: 26-38



027

030



022

026

027

Back



028

029

030

Back

V-2 BACK 1-PIECE 9502L

91% Polyester / 9% Spandex. Fully lined in bright, contrasting colors.

Prints: Fish Tales (022), On Your Mark (026), Light Bright (027) | Sizes: 24-40

STRING BACK 1-PIECE 9501L

91% Polyester / 9% Spandex. Fully lined in bright, contrasting colors.

Prints: Cool Summer (028), Graffiti Jungle (029), Push Play (030) | Sizes: 26-38



022



022

Back

026

027

WORKOUT 2-PIECE 6504L

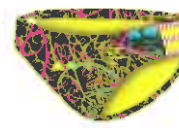
91% Polyester / 9% Spandex. Fully lined. Top and bottom internal drawcord.

Prints: Fish Tales (022), On Your Mark (026), Light Bright (027) | **Sizes:** XS-XL





028



028
Back

029

040

STRAPPY 2-PIECE 6501L

91% Polyester / 9% Spandex. Fully lined.

Prints: Cool Summer (028), Graffiti Jungle (029),
Rainbow Drop (040) | Sizes: XS-XL

uglies®

ROCK
THE
RACER





029



026

029
Back

MEN'S JAMMER 8050L

91% Polyester / 9% Spandex. Front panel liner.
Internal drawcord.

Prints: On Your Mark (026), Graffiti Jungle (029)
Sizes: 22-38



026



026
Back

029

MEN'S RACER 7050L

91% Polyester / 9% Spandex. Front panel liner.
Internal drawcord.

Prints: On Your Mark (026), Graffiti Jungle (029)
Sizes: 26-38



NEW! SHORTIES AND BOARDIES

Bring the party to the pool! Get wild. Get funky. Get ugly.





315



029



315
Back



337

NEW! SHORTY 71BSF

100% Soft Stretch Polyester. 5" inseam. Elastic waistband. Back and side pockets. Secret inside pocket. External drawcord.

Prints: Graffiti Jungle (029), Geo-rassic Park (315), Sir Pricks-a-lot (337) | **Sizes:** S-XXL



335



335
Back



336



338

NEW! BOARDY 71BSN

100% Soft Stretch Polyester. 9" inseam. Flat low profile waistband. Side cargo pocket. Secret inside pocket. External drawcord.

Prints: Go Bananas! (335), Rio (336), USA! USA! (338) | **Sizes:** S-XXL

A close-up photograph of two young girls in a swimming pool. They are both wearing swim caps and goggles. The girl on the left has a pink swim cap and purple goggles, and she is sticking her tongue out. The girl on the right has a blue swim cap and red goggles, and she is smiling with her tongue out. The background is a blurred blue pool.

uglies

SUN'S OUT

TONGUES OUT



040

043

044

Back



040

043

044

Back



040

043

044

Back

GIRLS 1-PIECE 9509G

91% Polyester / 9% Spandex. Fully lined in bright, contrasting colors.

Prints: Rainbow Drop (040), Flutterfly (043), Sweet Slice (044) | **Sizes:** 8-16

GIRLS TANKINI 9507G

91% Polyester / 9% Spandex. Front lined top and fully lined bottom in bright, contrasting colors. Bottom internal drawcord.

Prints: Rainbow Drop (040), Flutterfly (043), Sweet Slice (044) | **Sizes:** 8-16

GIRLS 2-PIECE 9504G

91% Polyester / 9% Spandex. Fully lined in bright, contrasting colors. Top and bottom internal drawcords.

Prints: Rainbow Drop (040), Flutterfly (043), Sweet Slice (044) | **Sizes:** 8-16

*Little
Dolphins*





040



046



040

Back

045

046



040



045



046
Back

LITTLE DOLPHINS 1-PIECE 9502T

91% Polyester / 9% Spandex. Fully lined in bright, contrasting colors.

Prints: Rainbow Drop (040), Berry Cute (045), Flower Power (046) | **Sizes:** 2T-6X

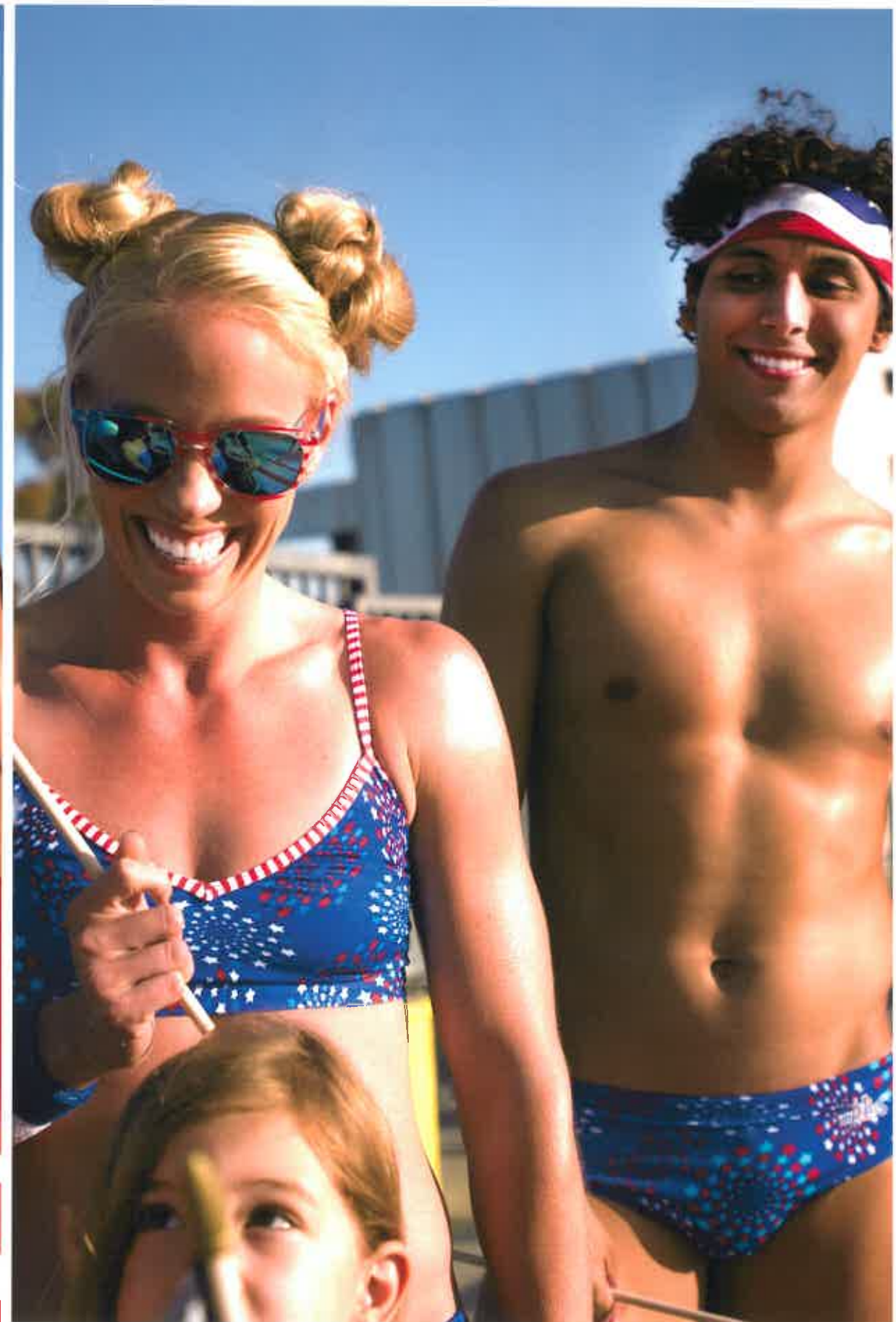
LITTLE DOLPHINS TANKINI 9505T

91% Polyester / 9% Spandex. Fully lined in bright, contrasting colors. Stay-put bows. Bottom internal drawcord.

Prints: Rainbow Drop (040), Berry Cute (045), Flower Power (046) | **Sizes:** 2T-6X



STARS & STRIPES





064

V-2 BACK 1-PIECE 9502L

91% Polyester / 9% Spandex. Fully lined in bright, contrasting colors.

Print: Patriot (064) | Sizes: 24-40



064

NEW! DOUBLE STRAP BACK 1-PIECE 9503L

91% Polyester / 9% Spandex. Fully lined in bright, contrasting colors.

Print: Patriot (064) | Sizes: 26-38



064



STRAPPY 2-PIECE 6501L

91% Polyester / 9% Spandex. Fully lined in bright, contrasting colors.

Print: Patriot (064) | Sizes: XS-XL



064

MEN'S JAMMER 8050L

91% Polyester / 9% Spandex. Front panel liner. Internal drawcord.

Print: Patriot (064) | Sizes: 22-38



064

MEN'S RACER 7050L

91% Polyester / 9% Spandex. Front panel liner. Internal drawcord.

Print: Patriot (064) | Sizes: 26-38



064

GIRLS 1-PIECE 9509G

91% Polyester / 9% Spandex. Fully lined in bright, contrasting colors.

Print: Patriot (064) | Sizes: 8-16



064

LITTLE DOLPHINS 1-PIECE 9502T

91% Polyester / 9% Spandex. Fully lined in bright, contrasting colors.

Print: Patriot (064) | Sizes: 2T-6X

LIVE
IN
WATER





WE ARE WATER-RAISED.

When you live in water, there's no time for multiple outfit changes a day. Save your award show attire for another time. From water to land, one wardrobe to rule them all. Your active lifestyle just met its match.

AQUASHAPE®

Features to fit every shape!

You move, you sweat, you grab and go, and you make life happen. Do it all with the perfect mix of fit, function and fashion to make you feel just right. Get through your busiest and most relaxing days... oh, and look good doing it.

BENEFITS:



PILLING RESISTANT



ULTRA SOFT



50+ UV PROTECTION



CHLORINE RESISTANT



TWO-WAY STRETCH



SHAPE RETENTION



TUMMY CONTROL

- Designed specifically to contour and control
- Power mesh front liner smooths your core



HIP & THIGH MINIMIZER

- Designed with strategic flattering coverage



BUST ENHANCE

- Flattering necklines that enhance the bust
- Signature supportive shelf bra design



ACTIVE FASHION

- Function and style that fits your lifestyle

*Benefits vary per suit

NEW!
Flyaway Tankini
Top [pg. 45]



048



048
Back

049

COLOR BLOCK SWIM DRESS 353CSD

91% Polyester / 9% Spandex. Shelf bra with removable cups. Power mesh front liner. Post-Mastectomy friendly.

Prints: Ikat (048), Iris Blue (049)
Sizes: 6-26



480



250

290

480

790

Back

SWEETHEART SWIM DRESS 363SSD

91% Polyester / 9% Spandex. Shelf bra with sewn-in cups. Power mesh front liner. Adjustable straps.

Colors: Red (250), Purple (290), Blue (480), Black (790) | Sizes: 6-26





049



047

048

049
Back

V-NECK FRONT PANEL 1-PIECE 353VPS

91% Polyester / 9% Spandex. Shelf bra with removable cups. Power mesh front liner. Post-Mastectomy friendly.

Prints: Botanica (047), Ikat (048), Iris Blue (049)

Sizes: 6-26



TUMMY CONTROL



BUST ENHANCE



ACTIVE FASHION



047



047

048

Back

RUFFLE TIER 1-PIECE 353RT

91% Polyester / 9% Spandex. Shelf bra with removable cups. Power mesh front liner. Adjustable straps.

Prints: Botanica (047), Ikat (048)

Sizes: 6-22



TUMMY CONTROL



BUST ENHANCE



290



290

480

790

Back

DRAPE FRONT 1-PIECE 363DF

91% Polyester / 9% Spandex. Shelf bra with sewn-in cups. Power mesh front liner. Adjustable straps.

Colors: Purple (290), Blue (480), Black (790)

Sizes: 6-22



TUMMY CONTROL



BUST ENHANCE



186
Back



727



728



729

X-BACK 1-PIECE 363XB

91% Polyester / 9% Spandex. Shelf bra with removable cups. Adjustable straps.

Colors: Navy/Lavendar/Light Blue (186), Black/Purple/Coral (727), Black/Pink/Turq (728), Navy/Blue/Lime (729)

Sizes: 6-22



ACTIVE
FASHION



LIFESTYLE AQUASHAPE



**COVER UP
WITH CONFIDENCE**



100

NEW! PONCHO COVER-UP 373PC
87% Polyester / 13% Spandex

Colors: White (100), Black (790)
Sizes: XS-XXL

Shown over V-Neck Front Panel 1-Piece [pg. 40]



LIFESTYLE / AQUASHAPE

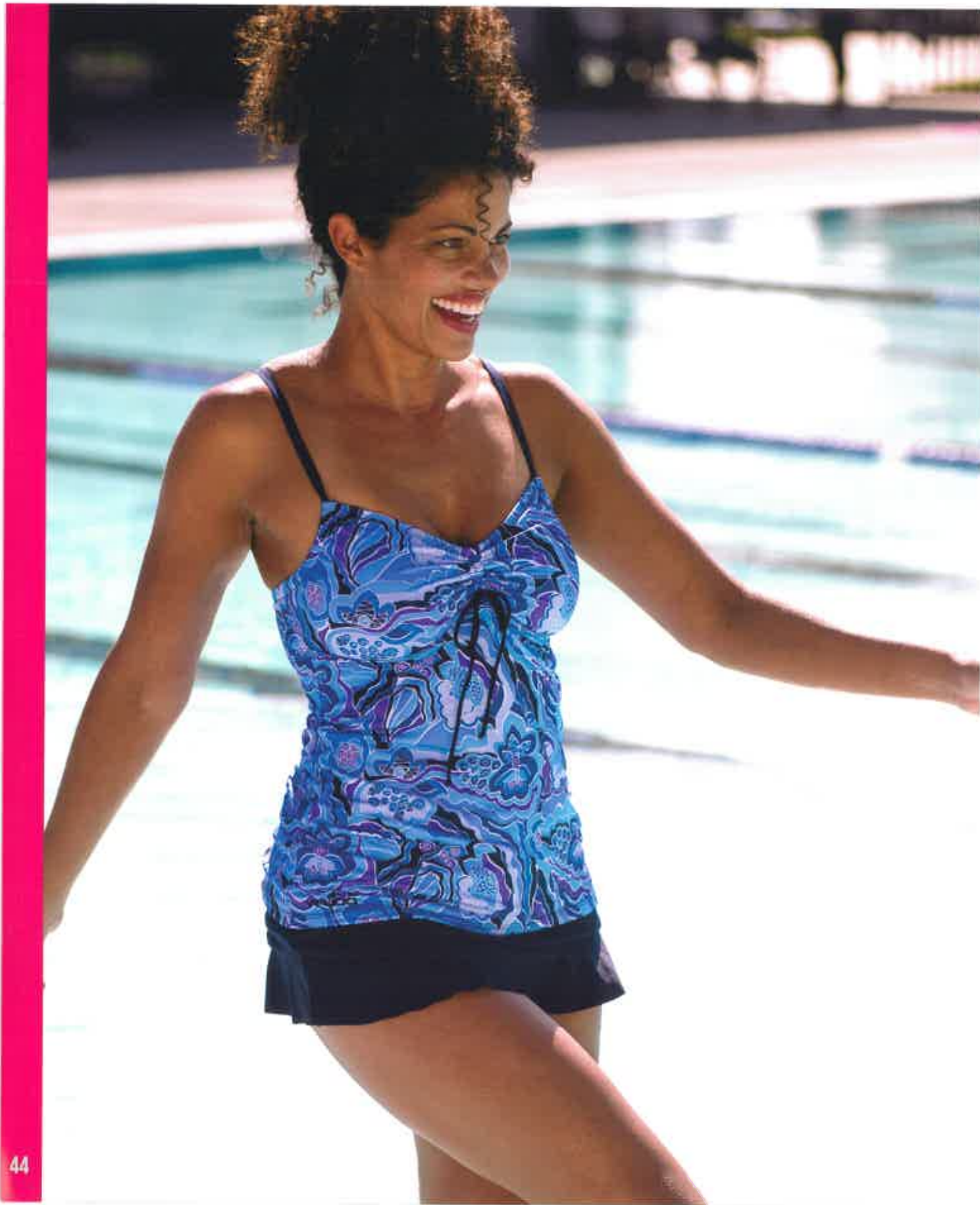


790

NEW! SLEEVELESS V-NECK COVER-UP 374VC
74% Nylon / 26% Spandex

Colors: White (100), Black (790)
Sizes: XS-XXL

Shown over Ruffle Tier 1-Piece [pg. 40]



015



015
Back



790

NEW! WRAP TANKINI TOP 363WTT
90% Polyester / 10% Spandex. Shelf bra with sewn-in cups. Power mesh front liner. Adjustable straps.

Colors: Eggplant (015), Black (790)
Sizes: XS-XXL



TUMMY
CONTROL



062



062
Back

790



047

480



047
Back

048

049

PRINT TIE FRONT TANKINI TOP 353TFT

91% Polyester / 9% Spandex. Full shelf bra with removable cups. Adjustable and convertible straps. Adjustable neckline with ties.

Prints: Botanica (047), Ikat (048), Iris Blue (049)

Sizes: XS-XXL



BUST
ENHANCE



230

480

490
Back

790

RUCHED SWIM SKIRT 363RS

91% Polyester / 9% Spandex. Fully lined. Attached inner brief with gusset liner. Adjustable length through side ruching. 8³/₄" length [size L].

Colors: Pink (230), Blue (480), Navy (490), Black (790) | Sizes: XS-XXL



HIP & THIGH
MINIMIZER



ACTIVE
FASHION



054

054



054
Back



055

RACERBACK TANKINI TOP 351TT

100% Polyester. Full shelf bra with removable cups.

Prints: Knotty Flowers Pink (054),
Knotty Flowers Turq (055) | Sizes: XS-XXL



ACTIVE
FASHION



054
Back



055

A-LINE SWIM SKIRT PRINT 3513SK

100% Polyester. Attached inner brief with gusset liner. Strategic flattering 2" waistband. 11 1/4" length [size L].

Prints: Knotty Flowers Pink (054),
Knotty Flowers Turq (055) | Sizes: XS-XXL



HIP & THIGH
MINIMIZER





722
Back

908

984

985

986

T-STRAP TANKINI TOP 3612TT

100% Polyester. Full shelf bra with removable cups.

Colors: Black/Gray (722), Blue/Black (908), Mint/Navy (984), Raspberry/Gray (985), Violet/Black (986) | **Sizes:** XS-XXL



ACTIVE FASHION



490

757
Back

790

A-LINE SWIM SKIRT SOLID 3613SK

100% Polyester. Attached inner brief with gusset liner. Strategic flattering 2" waistband. 11¹/₄" length [size L].

Colors: Navy (490), Gray (757), Black (790)
Sizes: XS-XXL



HIP & THIGH MINIMIZER



722

757



SCOOPNECK TANKINI TOP 363TT
91% Polyester / 9% Spandex. Full shelf bra with removable cups. Adjustable and convertible straps.
Colors: Purple (290), Blue (480), Navy (490), Black (790) | **Sizes:** XS-XXL



Shown with A-line Swim Skirt Solid [pg. 47]



NEW!
Flyaway Tankini
Top [pg. 45]



430



790



290



430
Back



480



790

MEDIUM SUPPORT AQUABRA SOLID 363ABM

91% Polyester / 9% Spandex. Fully lined. Removable cups. Adjustable straps.

Colors: Purple (290), Mint (430), Blue (480), Black (790) | Sizes: 32-40



ACTIVE FASHION



290



480



790
Back

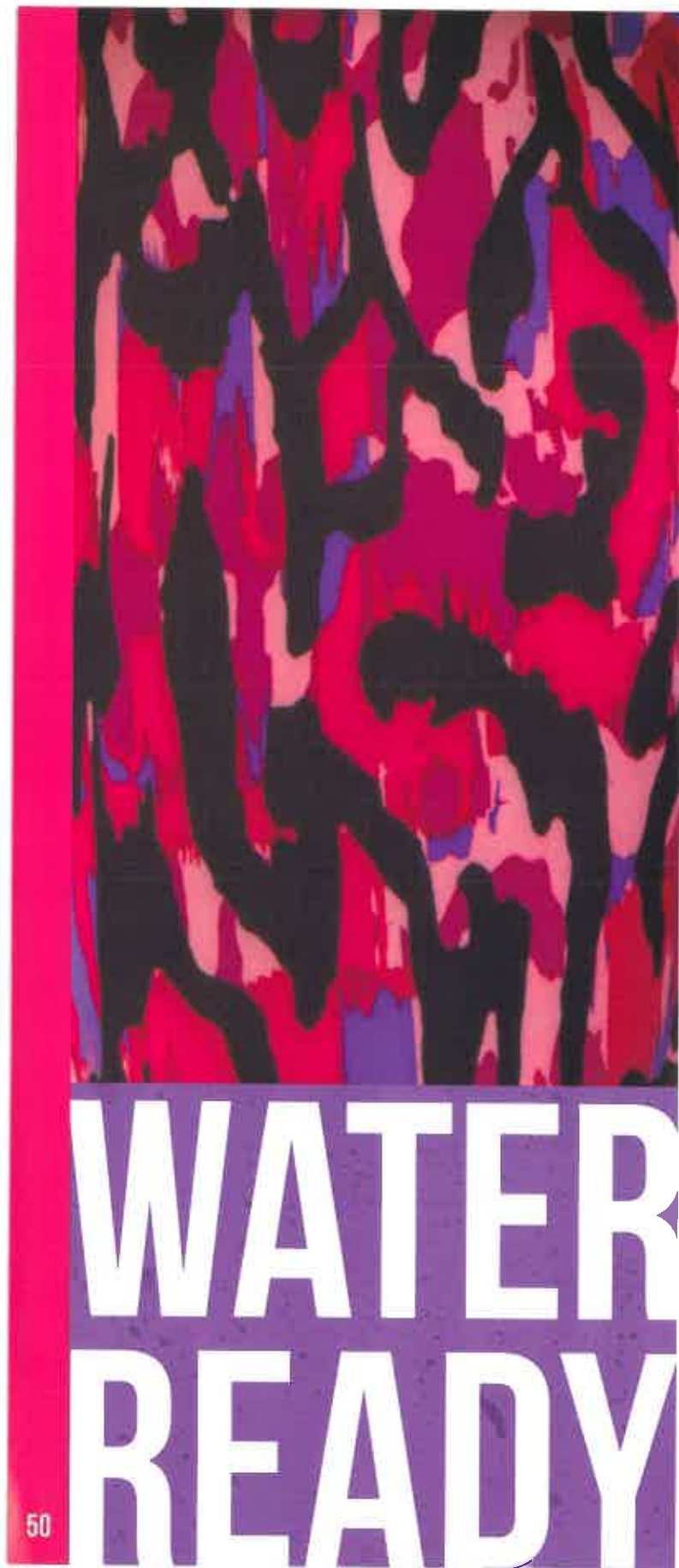
AQUATIGHT 363AT

91% Polyester / 9% Spandex. Gusset liner. Flattering 1 1/4" comfort waistband. Flat seams. 24 3/4" inseam [size L]. Internal drawcord.

Colors: Purple (290), Blue (480), Black (790)
Sizes: XS-XXL



ACTIVE FASHION



790
Back

NEW! AQUA CAPRI SOLID 363AC
91% Polyester / 9% Spandex. Gusset liner. Flattering 1^{3/4}"
comfort waistband. Flat seams. 19^{5/8}" inseam [size L].
Internal drawcord.

Color: Black (790) | **Sizes:** XS-XXL



048
Back

NEW! AQUA CAPRI PRINT 353AC
91% Polyester / 9% Spandex. Gusset liner. Flattering 1^{3/4}"
comfort waistband. Flat seams. 19^{5/8}" inseam [size L].
Internal drawcord.

Print: !Kat (048) | **Sizes:** XS-XXL





*Print Tie Front
Tankini Top [pg. 45]*



*NEW!
Flyaway Tankini
Top [pg. 45]*



490



790

WOMEN'S CONTEMPORARY BRIEF 363BB

91% Polyester / 9% Spandex. Fully lined. Flattering 1¹/₂" comfort waistband. Contemporary cut with our highest leg opening. Modest rear coverage.

Colors: Navy (490), Black (790)

Sizes: XS-XXL



490



757



790

WOMEN'S MODERATE CUT BRIEF 69005

100% Polyester. Fully lined. Strategic flattering 2" waistband. Sits between your natural waist and hips. Modern cut with a slightly high leg opening. Modest rear coverage.

Colors: Navy (490), Gray (757), Black (790)

Sizes: XS-XXL



490



757



790

WOMEN'S CONSERVATIVE CUT BRIEF 69003

100% Polyester. Fully lined. Strategic flattering 2" waistband. Sits at your natural waist. Higher waist for added tummy control. Low leg opening. Modest rear coverage.

Colors: Navy (490), Gray (757), Black (790)

Sizes: XS-XXL



490



790

WOMEN'S FITTED SHORT 361SH

100% Polyester. Gusset liner. 3⁷/₈" inseam [size L]. Strategic flattering 2" waistband. Stay-put legs.

Colors: Navy (490), Black (790)

Sizes: XS-XXL



490



790

WOMEN'S FITTED JAMMER 361JA

100% Polyester. Gusset liner. 10¹/₄" inseam [size L]. Strategic flattering 2" waistband. Stay-put legs.

Colors: NEW! Navy (490), Black (790)

Sizes: XS-XXL



LIFESTYLE AQUASHAPE

432



183



431



432
Back



722



723

CONSERVATIVE LAP SUIT COLOR BLOCK 68553

100% Polyester. Fully lined. Shelf bra with sewn-in cups.

Colors: Purple/Violet (183), Navy/Green (431),
Navy/Royal (432), Black/Gray (722), Black/Pink (723)
Sizes: 6-22



ACTIVE
FASHION

933



291



930



932



933
Back

MODERATE LAP SUIT COLOR BLOCK 60546

100% Polyester. Fully lined. Shelf bra.

Colors: Navy/Bright Pink (291), Navy/Lime (930),
Black/Turq (932), Black/Purple (933)
Sizes: 6-22



ACTIVE
FASHION



930



291



930
Back



932

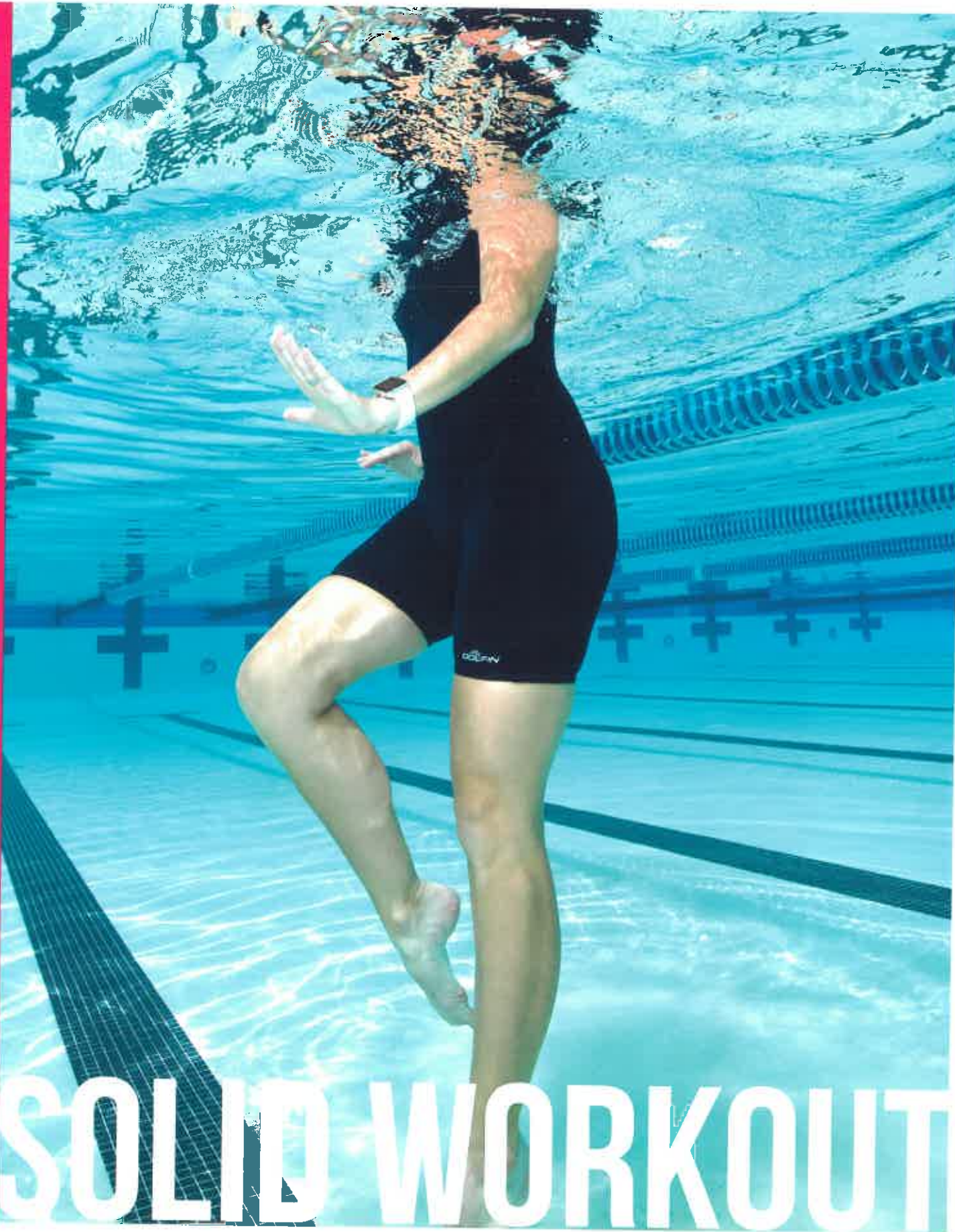
AQUATARD COLOR BLOCK 66557

100% Polyester. Fully lined. Shelf bra.

Colors: Navy/Bright Pink (291), Navy/Lime (930),
Black/Turq (932) | Sizes: 6-22



ACTIVE
FASHION



790



490



790
Back

MODERATE SCOOPBACK SOLID 60567

100% Polyester. Fully lined. Shelf bra with sewn-in cups. Side ruching at bust.

Colors: Navy (490), Black (790)

Sizes: 6-22



ACTIVE
FASHION

490



490
Back

790

AQUATARD SOLID 60557

100% Polyester. Fully lined. Shelf bra.

Colors: Navy (490), Black (790)
Sizes: 6-22



410



290



410
Back



475



490



790

CONSERVATIVE LAP SUIT SOLID 60553

100% Polyester. Fully lined. Shelf bra with sewn-in cups.

Colors: Purple (290), Turq (410), Royal (475),
Navy (490), Black (790) | Sizes: 6-22





ZIP-FRONT 1-PIECE 60575
100% Polyester. Fully lined. Shelf bra with removable cups. Locking zipper for easy on and off.

Colors: Black/Pink (723), Navy/Blue (911), Navy/Teal (912), Black/Purple (933)
Sizes: 6-22





911



723



911
Back



912



933

ZIP-FRONT AQUATARD 60585

100% Polyester. Full shelf bra with removable cups. Locking zipper for easy on and off.

Colors: Black/Pink (723), Navy/Blue (911), Navy/Teal (912), Black/Purple (933) | **Sizes:** 6-22



ACTIVE FASHION

bellas[™]

Whether you want to show up the boys in beach volleyball or soak up the sun, [or both!], the day is yours!





018



018



019

Back



019

NEW! REVERSIBLE STRING BACK 253STR

91% Polyester / 9% Spandex

Prints: Cancun (018), Spaced Out (019)

Sizes: 24-40



018



3 Ways To Wear

ULTRA LOW BACK PRINT 253ULB

91% Polyester / 9% Spandex. Fully lined. Removable cups. Adjustable and convertible strap system.

Print: Cancun (018) | Sizes: XS-XL





790



3 Ways To Wear!

ULTRA LOW BACK SOLID 263ULB

91% Polyester / 9% Spandex. Fully lined. Removable cups. Adjustable and convertible strap system.

Color: Black (790) | **Sizes:** XS-XL

bellas[™]



187



019



187
Back

TIE BACK PRINT 2531TB

91% Polyester / 9% Spandex. Fully lined.
Adjustable tie back.

Prints: Spaced Out (019), Pluma (187) | **Sizes:** 24-40



244



250
Back



410



480



790

TIE BACK SOLID 2631TB

91% Polyester / 9% Spandex. Fully lined.
Adjustable tie back.

Colors: Coral (244), Red (250), Turq (410), Blue (480),
Black (790) | Sizes: 24-40

250



MIX & MATCH

Color match with solid bikinis (pg. 68 & 69)



VENTED BIKINI TOP PRINT 2532BT
91% Polyester / 9% Spandex. Fully lined. Removable cups. Adjustable ties.

Prints: Cancun (018), Spaced Out (019), Pluma (187) | **Sizes:** XS-XL



BIKINI BOTTOM PRINT 2533BB
91% Polyester / 9% Spandex. Fully lined. Internal drawcord.

Prints: Cancun (018), Spaced Out (019), Pluma (187) | **Sizes:** XS-XL



LONGLINE BIKINI TOP 253LLT
91% Polyester / 9% Spandex. Fully lined. Removable cups.

Prints: Cancun (018), Pluma (187) | **Sizes:** XS-XL



BOY SHORT 253BS
91% Polyester / 9% Spandex. Fully lined. External drawcord.

Prints: Cancun (018), Pluma (187) | **Sizes:** XS-XL



018

019



018



018



019

Back



019

REVERSIBLE BIKINI TOP 253BTR

91% Polyester / 9% Spandex. Sewn-in soft cups.

Prints: Cancun (018), Spaced Out (019)

Sizes: XS-XL



018



018



019

Back



019

REVERSIBLE BIKINI BOTTOM 253BBR

91% Polyester / 9% Spandex. Secure drawcord.

Prints: Cancun (018), Spaced Out (019)

Sizes: XS-XL





color match
with printed
bikinis
(pg. 66 & 67)



790



244



290



410



790

Back

VENTED BIKINI TOP SOLID 2632VBT

91% Polyester / 9% Spandex. Fully lined. Removable cups. Adjustable ties.

Colors: Coral (244), Purple (290), Turq (410), Black (790)
Sizes: XS-XL



290



290

Back

430

790

CROP BIKINI TOP 263CBT

91% Polyester / 9% Spandex. Fully lined. Removable cups. Adjustable ties.

Colors: Purple (290), Mint (430), Black (790)
 Sizes: XS-XL



480

480



230



430



480

Back



790

STRAPPY TRIANGLE TOP 6550L

91% Polyester / 9% Spandex. Fully lined. Removable cups. Adjustable ties.

Colors: Pink (230), Mint (430), Blue (480), Black (790) | Sizes: XS-XL



230



430



480

Back



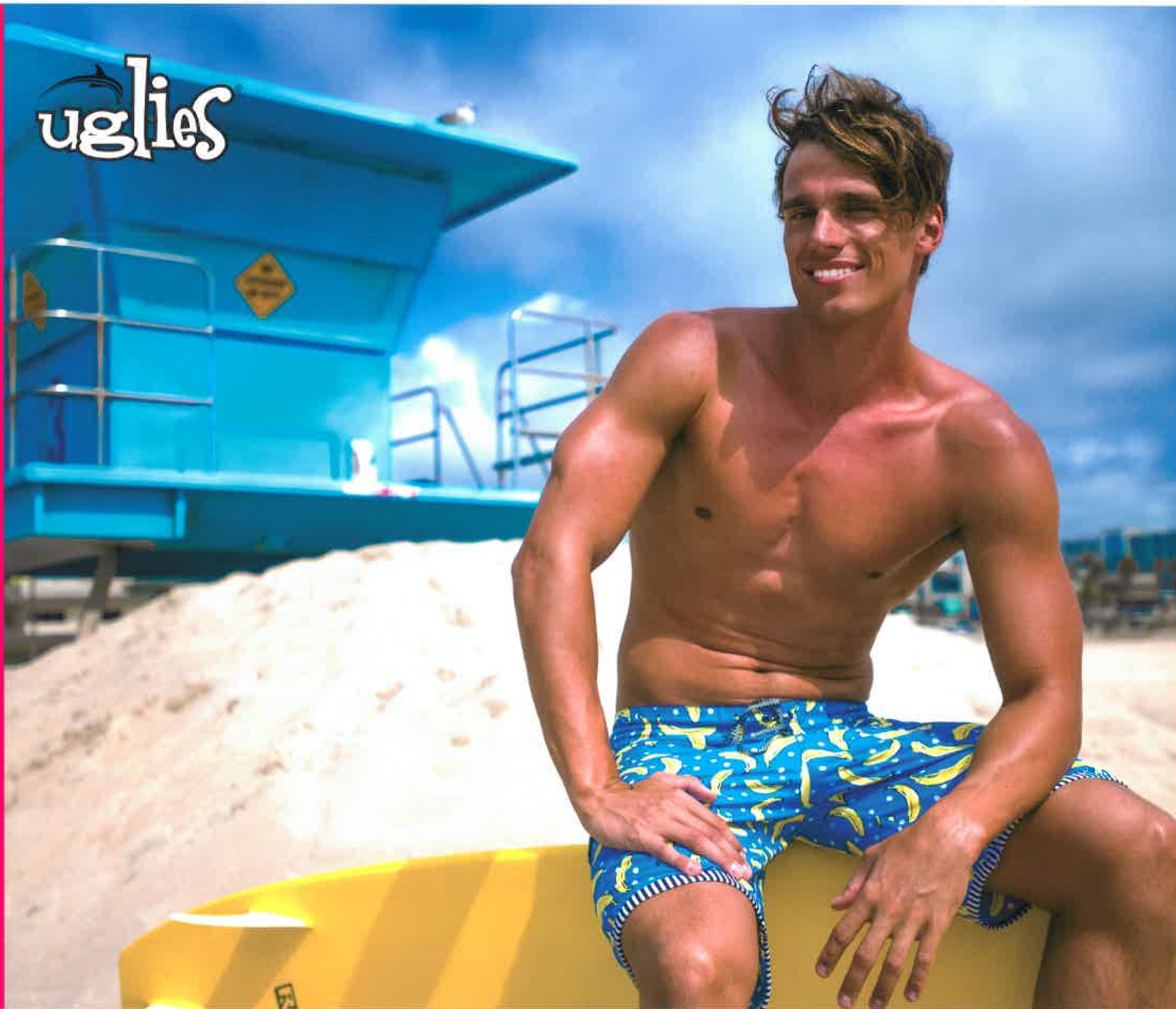
790

CHEEKY BOTTOM 6540L

91% Polyester / 9% Spandex. Fully lined. Contrasting internal drawcord.

Colors: Pink (230), Mint (430), Blue (480), Black (790) | Sizes: XS-XL

uglies



337



338



029



315



337
Back



335



336



338
Back

NEW! SHORTY 71BSF

100% Soft Stretch Polyester. 5" inseam. Elastic waistband. Back and side pockets. Secret inside pocket. External drawcord.

Prints: Graffiti Jungle (029), Geo-rassic Park (315), Sir Pricks-a-lot (337) | **Sizes:** S-XXL

NEW! BOARDY 71BSN

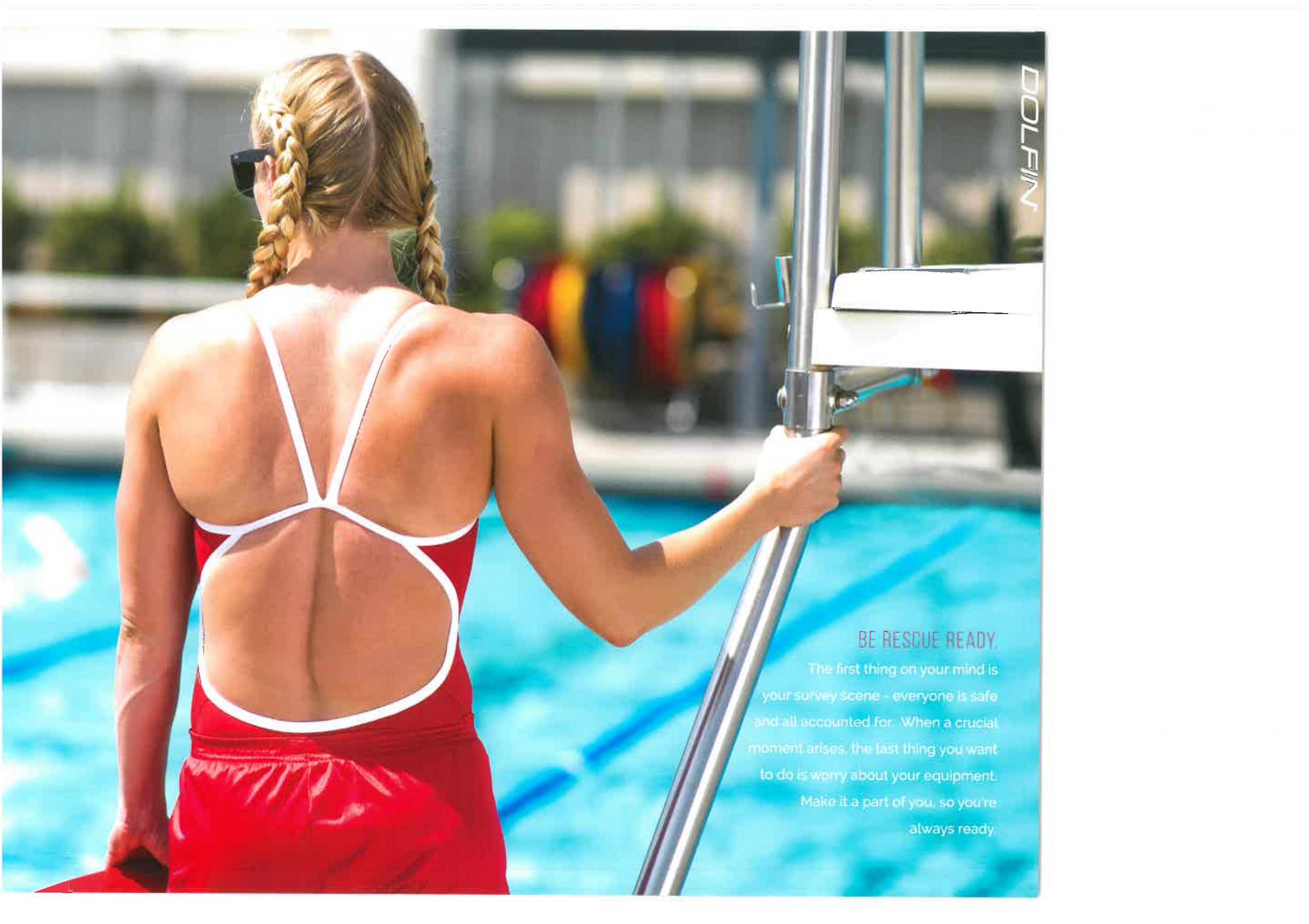
100% Soft Stretch Polyester. 9" inseam. Flat low profile waistband. Side cargo pocket. Secret inside pocket. External drawcord.

Prints: Go Bananas! (335), Rio (336), USA! USA! (338) | **Sizes:** S-XXL

GUARD

**EQUIPPED
TO SAVE
LIVES**





DOLFIN

BE RESCUE READY.

The first thing on your mind is your survey scene - everyone is safe and all accounted for. When a crucial moment arises, the last thing you want to do is worry about your equipment. Make it a part of you, so you're always ready



25G



25G
Back



47G



49G



79G

DBX BACK 9582C

100% Polyester. Fully lined.

Colors: Red (25G), Royal (47G), Navy (49G), Black (79G) | Sizes: 22-44



47G



25G



47G
Back



49G



79G

V-2 BACK SOLID 9615L

80% Nylon / 20% Xtra Life Lycra. Fully lined.

Colors: Red (25G), Royal (47G), Navy (49G), Black (79G) | Sizes: 22-40





HP BACK SOLID 7515L
 80% Nylon / 20% Xtra Life Lycra.
 Fully lined.
Colors: Red (25G), Royal (47G),
 Navy (49G), Black (79G) | **Sizes:** 22-44



VARSITY SOLID 9601C
 100% Polyester. Fully lined.
Colors: Royal/White (G14), Red/White (G25),
 Navy/White (G37), Red/Navy (G43),
 Black/White (G96) | **Sizes:** 22-40

* All Dolfin Guard product is available with or without the Guard logo



25G

26G



25G
Back



47G



49G



79G

2-PIECE TOP SOLID 6582C

100% Polyester. Fully lined.

Colors: Red (25G), Royal (47G), Navy (49G), Black (79G) | Sizes: XS-XL



26G
Back



47G



49G



79G

WOMEN'S COVER-UP SHORT 1727T

100% Nylon Tricot

Colors: Red (25G), Royal (47G), Navy (49G), Black (79G) | Sizes: S-XL





250

476



496

796
Back

TANKINI TOP SOLID 6584C

100% Polyester. Fully lined. Shelf bra.

Colors: Red (25G), Royal (47G), Navy (49G), Black (79G) | Sizes: XS-XL



250

475



490

790
Back

2-PIECE BOTTOM SOLID 6583C

100% Polyester. Fully lined.

Colors: Red (250), Royal (475), Navy (490), Black (790) | Sizes: XS-XL



* All Dolfin Guard product is available with or without the Guard logo

25G



25G
Back



48G

NEW! WOMEN'S RASHGUARD 5732RG
90% Polyester / 10% Spandex. Crew neck.

Colors: Red (25G), Blue (48G)
Sizes: XS-XXL





25G
Back



48G

NEW! MEN'S RASHGUARD 5735RG
90% Polyester / 10% Spandex. Crew neck.

Colors: Red (25G), Blue (48G)
Sizes: S-XXL



25G



47G



49G

Back



79G

MEN'S WATER SHORT 9060N

100% Nylon. 5" inseam [size L]. Mesh liner. Side pockets. Internal drawcord.

Colors: Red (25G), Royal (47G), Navy (49G), Black (79G) | **Sizes:** S-XXXL



* All Dolfin Guard product is available with or without the Guard logo



25G



47G

Back



49G



79G

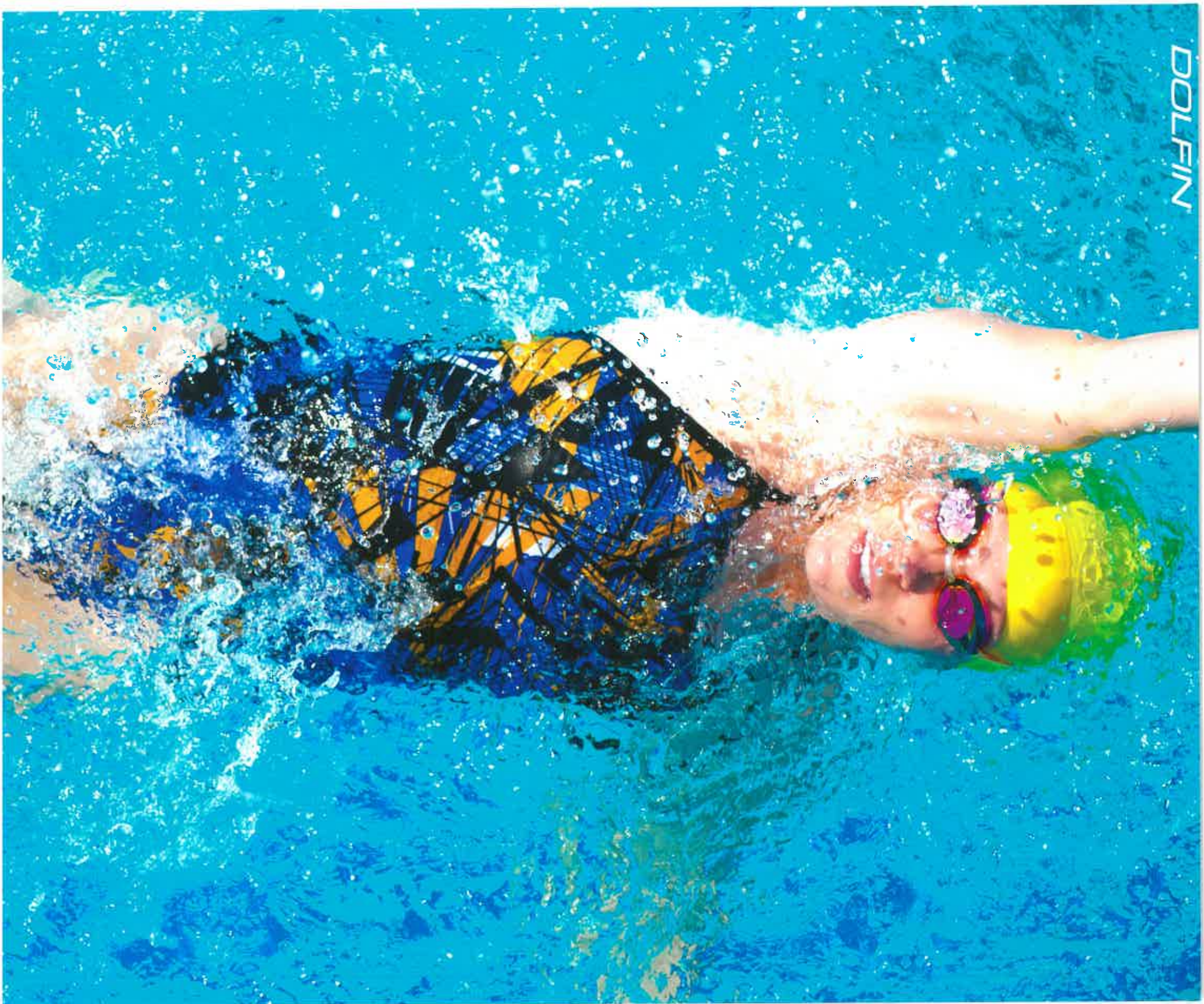
MEN'S BOARD SHORT 9780P

100% Microfiber Polyester. 9¹/₄" inseam [size L]. Elastic waistband. Mesh liner. Side cargo pocket. External drawcord.

Colors: Red (25G), Royal (47G), Navy (49G), Black (79G) | **Sizes:** S-XXL

TEAM COLOR GUIDE





DOLFIN

BLUE TEAMS

GRAPHYLITE



VANTAGE | (105)
124CBG Cross Back
144JMG Jammer, 144RAG Racer



INFINITI | (101)
124MTG MT Back
144JMG Jammer, 144RAG Racer



SOLID | (475)
114CBG Cross Back
134JMG Jammer, 134RAG Racer

POLYFUSION



FRACTURE | (121)
123DCB Double Cross Back
143JM Jammer, 143RA Racer



ABYSS | (144)
123PB Performance Back
143JM Jammer

RELIANCE



LAVA | (152)
121DBX DBX Back
141JM Jammer, 141RA Racer



GENESIS | (561)
121VB V Back
141JM Jammer, 141RA Racer



PHANTOM | (159)
121VB V Back
141JM Jammer



ION | (066) [pg. 17]
121DBX DBX Back
141JM Jammer



COLOR BLOCK | (946)
9974C DBX Back
8974C Jammer, 7974C Racer



SOLID | (475)
9582C DBX Back
8150C Jammer, 7150C Racer



SOLID | (490)
9582C DBX Back
8150C Jammer, 7150C Racer



SOLID | (410)
9582C DBX Back



VARSITY SOLID | (147)
9601C String Back



VARSITY SOLID | (475)
9601C String Back



VARSITY SOLID | (490)
9601C String Back



VARSITY SOLID | (946)
9601C String Back

XTRA SLEEK ECO



TORRENT | (168)
124VT V-2 Back
144JM Jammer, 144RA Racer



DENALI | (526)
124DBX DBX Back
144JM Jammer



HURRICANE | (081) [pg. 19]
124VT V-2 Back
144JM Jammer

XTRA SLEEK



TEAM PANEL | (946)
9672L V-2 Back
8610L Jammer, 7610L Racer



TEAM SOLID | (475)
9615L V-2 Back
8900L Jammer, 7900L Racer



TEAM SOLID | (490)
9615L V-2 Back
8900L Jammer, 7900L Racer



TEAM SOLID | (475)
7515L HP Back



TEAM SOLID | (490)
7515L HP Back

GREEN TEAMS

GRAPHYLITE



VANTAGE | (107)
124CBG Cross Back
144JMG Jammer, 144RAG Racer



INFINITI | (102)
124MTG MT Back
144JMG Jammer, 144RAG Racer



SOLID | (560)
114CBG Cross Back
134JMG Jammer, 134RAG Racer

POLYFUSION



FRACTURE | (122)
123DCB Double Cross Back
143JM Jammer, 143RA Racer



ABYSS | (145)
123PB Performance Back
143JM Jammer

GREEN TEAMS CONTINUED

RELIANCE



LAVA | (153)
121DBX DBX Back
141JM Jammer, 141RA Racer



GENESIS | (562)
121VB V Back
141JM Jammer, 141RA Racer



PHANTOM | (161)
121VB V Back
141JM Jammer



ION | (072) [pg. 17]
121DBX DBX Back
141JM Jammer



COLOR BLOCK | (947)
9974C DBX Back
8974C Jammer, 7974C Racer



SOLID | (585)
9582C DBX Back
8150C Jammer, 7150C Racer



VARSITY SOLID | (963)
9601C String Back

XTRA SLEEK ECO



TORRENT | (169)
124VT V-2 Back
144JM Jammer, 144RA Racer



DENALI | (527)
124DBX DBX Back
144JM Jammer



HURRICANE | (082) [pg. 19]
124VT V-2 Back
144JM Jammer

XTRA SLEEK



TEAM PANEL | (712)
9672L V-2 Back
8610L Jammer, 7610L Racer



TEAM SOLID | (560)
9615L V-2 Back
8900L Jammer, 7900L Racer



TEAM SOLID | (560)
7515L HP Back

RED TEAMS

GRAPHYLITE



VANTAGE | (108)
124CBG Cross Back
144JMG Jammer, 144RAG Racer



INFINITI | (103)
124MTG MT Back
144JMG Jammer, 144RAG Racer



SOLID | (250)
114CBG Cross Back
134JMG Jammer, 134RAG Racer

POLYFUSION



ABYSS | (146)
123PB Performance Back
143JM Jammer

RELIANCE



LAVA | (154)
121DBX DBX Back
141JM Jammer, 141RA Racer



GENESIS | (565)
121VB V Back
141JM Jammer, 141RA Racer



PHANTOM | (162)
121VB V Back
141JM Jammer



COLOR BLOCK | (721)
9974C DBX Back
8974C Jammer, 7974C Racer



SOLID | (250)
9582C DBX Back
8150C Jammer, 7150C Racer



VARSITY SOLID | (125) 9601C String Back
VARSITY SOLID | (250) 9601C String Back
VARSITY SOLID | (949) 9601C String Back

XTRA SLEEK ECO



TORRENT | (170)
124VT V-2 Back
144JM Jammer, 144RA Racer



DENALI | (529)
124DBX DBX Back
144JM Jammer

RED TEAMS CONTINUED

XTRA SLEEK ECO



HURRICANE | (085) [pg. 19]
124VT V-2 Back
144JM Jammer

XTRA SLEEK



TEAM PANEL | (721)
9672L V-2 Back
8610L Jammer, 7610L Racer



TEAM SOLID | (250)
9615L V-2 Back
8900L Jammer, 7900L Racer



TEAM SOLID | (250)
7515L HP Back

PURPLE TEAMS

POLYFUSION



FRACTURE | (124)
123DCB Double Cross Back
143JM Jammer, 143RA Racer

RELIANCE



PHANTOM | (165)
121VB V Back
141JM Jammer



COLOR BLOCK | (713)
9974C DBX Back
8974C Jammer, 7974C Racer



SOLID | (290)
9582C DBX Back
8150C Jammer, 7150C Racer

XTRA SLEEK ECO



HURRICANE | (083) [pg. 19]
124VT V-2 Back
144JM Jammer



DENALI | (528)
124DBX DBX Back
144JM Jammer

XTRA SLEEK



TEAM PANEL | (713)
9672L V-2 Back
8610L Jammer, 7610L Racer



TEAM SOLID | (290)
9615L V-2 Back
8900L Jammer, 7900L Racer



TEAM SOLID | (290)
7515L HP Back

BLACK TEAMS

GRAPHLITE



INFINITI | (104)
124MTG MT Back
144JMG Jammer, 144RAG Racer

SOLID | (790)
114CBG Cross Back
134JMG Jammer, 134RAG Racer

POLYFUSION



FRACTURE | (127)
123DCB Double Cross Back
143JM Jammer, 143RA Racer

RELIANCE



SOLID | (790)
9582C DBX Back
8150C Jammer, 7150C Racer

Varsity Solid | (790)
9601C String Back



Varsity Solid | (968)
9601C String Back

XTRA SLEEK



TEAM SOLID | (790)
9615L V-2 Back
8900L Jammer, 7900L Racer



TEAM SOLID | (790)
7515L HP Back

GOLD TEAMS

RELIANCE



LAVA | (157)
121DBX DBX Back
141JM Jammer, 141RA Racer

PHANTOM | (167)
121VB V Back
141JM Jammer

XTRA SLEEK



TEAM PANEL | (711)
9672L V-2 Back
8610L Jammer, 7610L Racer

ORANGE TEAMS

GRAPHLITE



VANTAGE | (110)
124CBG Cross Back
144JMG Jammer, 144RAG Racer

RELIANCE



LAVA | (156)
121DBX DBX Back
141JM Jammer, 141RA Racer



PHANTOM | (166)
121VB V Back
141JM Jammer

BLUE 2 COLOR TEAMS

POLYFUSION



ABYSS | (150)
123PB Performance Back
143JM Jammer

RELIANCE



ION | (073) [pg. 17]
121DBX DBX Back
141JM Jammer



GENESIS | (596)
121VB V Back
141JM Jammer, 141RA Racer



GENESIS | (651)
121VB V Back
141JM Jammer, 141RA Racer



COLOR BLOCK | (957)
9974C DBX Back
8974C Jammer, 7974C Racer



COLOR BLOCK | (958)
9974C DBX Back
8974C Jammer, 7974C Racer



VARSITY SOLID | (935)
9601C String Back

VARSITY SOLID | (936)
9601C String Back

XTRA SLEEK ECO



TORRENT | (171)
124VT V-2 Back
144JM Jammer, 144RA Racer



TORRENT | (175) [pg. 81]
124VT V-2 Back
144JM Jammer, 144RA Racer

RED, WHITE & BLUE TEAMS

RELIANCE



ION | (074) [pg. 17]
121DBX DBX Back
141JM Jammer



VARSITY SOLID | (143)
9601C String Back

XTRA SLEEK ECO



DENALI | (598)
124DBX DBX Back
144JM Jammer

MAROON TEAMS

RELIANCE



SOLID | (270)
9582C DBX Back
8150C Jammer, 7150C Racer

XTRA SLEEK



TEAM SOLID | (270)
9615L V-2 Back
8900L Jammer, 7900L Racer



TEAM SOLID | (270)
7515L HP Back

SIZE CHART

MEN'S:

MEN	18	20	22	24	26	28	30	32	34	36	38	40	42	44	46
CHEST [IN.]	24	26	28	30	32	34	36	38	40	42	44	46	48	50	52
WAIST [IN.]	20-22	22-24	24-25	25-26	26-28	28-30	30-32	32-34	34-36	36-38.5	38.5-41	41-43	43-45	45-47	47-49
HIP [IN.]	24-26	26-28	28-30	30-32	32-33	33-35	35-37	37-39	39-41	41-43	43-45.5	45.5-48	48-50	50-52	52-54

SHORTS	18	20	22	24	26	28	30	32	34	36	38	40	42	44	46
SIZE	N/A	N/A	N/A	XS	XS	S	S	M	M	L	L	XL	XL	XXL	XXXL

TECH SUITS	18	20	22	24	26	28	30	32	34
WAIST AT BELLY BUTTON [IN.]	23-24	24-26	26-28	28-30	30-32	32-34	34-36	36-38.5	38.5-41
HIP [IN.]	29-30	30-32	32-33.5	33.5-35	35-37	37-39	39-41	41-43	43-45.5

YOUTH:

GIRLS	8	10	12	14	16
CHEST [IN.]	27	28.5	30	31.5	33.5
WAIST [IN.]	24	25	26	28	30
HIP [IN.]	28	30	32	34	36

LITTLE DOLPHINS	2T	3T	4T	4	5	6	6X/7
CHEST [IN.]	20	21	22	22	23	24.5	26
WAIST [IN.]	19-19.5	20-20.5	21-21.5	22	22.5	23	23.5

WOMEN'S:

WOMEN	18	20	22	24	26	28	30	32	34	36	38	40	42	44	N/A	N/A	N/A	N/A
CHEST [IN.]	19-20	20-22	22-24	24-26	26-28	28-30	30-32	32-34	34-36	36-38	38-40	40-42	42-44	44-46	46-48	48-50	50-52	52-54
WAIST AT NARROWEST [IN.]	18-19	19-20	20-21	21-22	22-23	23-24	24-25	25-27	27-29	29-31	31-33	33-35	35-37	37-39	49-41.5	41.5-44	44-46.5	46.5-49
HIP AT FULLEST [IN.]	25-26	26-27	27-28	28-29	29-31	31-33	33-35	35-37	37-39	39-40.5	40.5-42	42-44	44-46	46-48	48-50	50-53	53-55	55-57
TORSO [IN.]	N/A	N/A	51	52.5	54	55.5	57	58.5	60	61.5	63	64.5	66	67.5	69	70.5	72	73.5

JEANS	18	20	22	24	24L	26	26L	28	28L	30	32	34
CHEST ACROSS FULLEST [IN.]	26-27	27-28	29-31	32-34	32-34	35-37	35-37	37-39	37-39	39-40	40-41	41-42
WAIST AT BELLY BUTTON [IN.]	21-22	22-24	25-27	28-29.5	28-29.5	30-31	30-31	31-33	31-33	33-34	34-35	35-36
HIP AT FULLEST [IN.]	N/A	N/A	N/A	35-36	35-36	36-37.5	36-37.5	39-40	39-40	40-41	41-42	42-43
TORSO [IN.]	56-58	58-60	61-63	64-66	65-67	65-67	66-68	66-68	67-69	67-69	68-70	69-71

JEANS	18	20	22	24	26	28	30	32	34	36	38	40	42	44
SIZE	N/A	N/A	N/A	N/A	XXS	XXS	XS	S	M	L	XL	N/A	N/A	N/A

JEANS SEPARATES	18	20	22	24	26	28	30	32	34	36	38	40	42	44
SIZE	N/A	N/A	N/A	N/A	XXS	XS	XS	S	M	L	XL	N/A	N/A	N/A

JEANS 1-PIECE	18	20	22	24	26	28	30	32	34	36	38	40	42	44	N/A	N/A	N/A	N/A
SIZE	N/A	N/A	N/A	N/A	N/A	N/A	N/A	6	8	10	12	14	16	18	20	22	24	26

JEANS SEPARATES	18	20	22	24	26	28	30	32	34	36	38	40	42	44	N/A	N/A	N/A
SIZE	N/A	N/A	N/A	N/A	N/A	XS	S	S	M	M	L	L	XL	XL	2X	2X	N/A



SPRING | SUMMER 2018

2136 N. 13th Street
Reading, PA 19604
Phone: 800.441.0818

www.dolphinswimwear.com
[instagram/dolphinswimwear](https://www.instagram.com/dolphinswimwear)
[twitter/dolphinswim](https://twitter.com/dolphinswim)
[facebook/dolphinswimwear](https://www.facebook.com/dolphinswimwear)

Elite Sportswear

